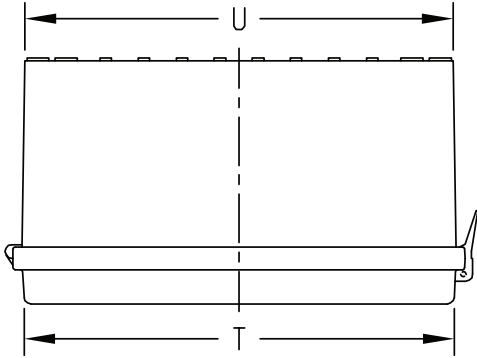




SMART FOG® CPLC CONTROLLER UNIT  
MODEL CPLC1, CPLC2, CPLC9, CPLC10

CALL 1-800-921-5230

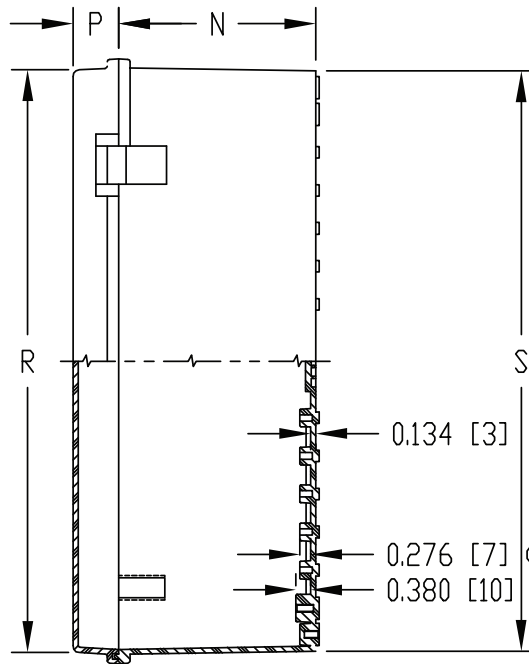
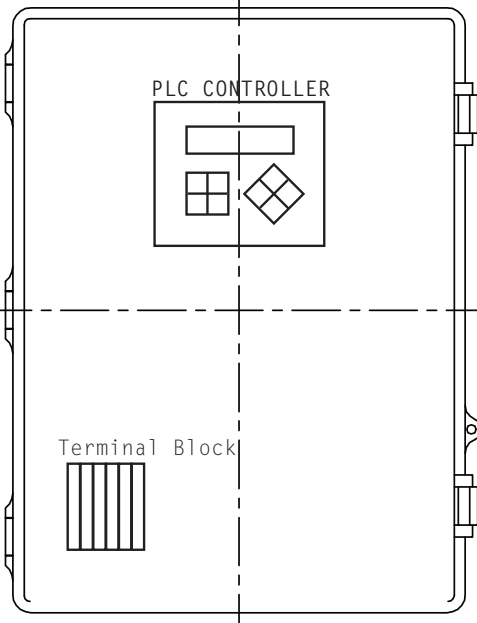
SPECIFICATIONS



WEIGHT  
WEIGHT: 10 LB [4.5 KG]

INPUT ELECTRICITY  
120VAC 3.2A

D: 1/2" Liquid Tight, Strain Relief Connector



Environment

Operational  
Temperature:  
32 to 122°F  
(0 to 50°C)

Storage  
Temperature:  
-4 to 140°F  
(-20 to 60°C)

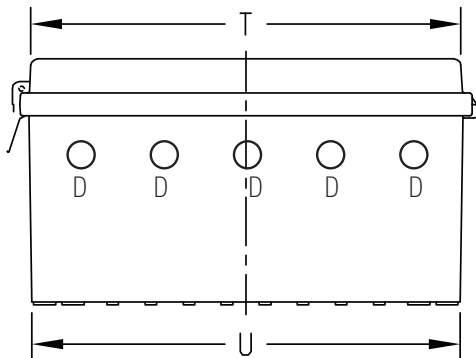
Inside  
Relative Humidity:  
rH: 10% to 95%  
(non-condensing)

Outside  
Relative Humidity:  
rH: 100%

NOTE:  
UNIT COMES COMPLETE WITH  
(4) WALL MOUNTING BRACKETS  
& (4) M5 x 10mm LG. TRUSS  
HD. MACHINE SCREWS

DIMENSIONS

N	P	R	S	T	U
5.110	1.185	15.105	15.035	11.147	11.090
[130]	[30]	[384]	[382]	[283]	[282]



Resource availability: 90% resource and memory are available.  
Removable Memory: Micro SD card Compatible with fast SD cards; store data logs, Alarms, Trends, Data Tables, backup Ladder, HMI, and OS.

